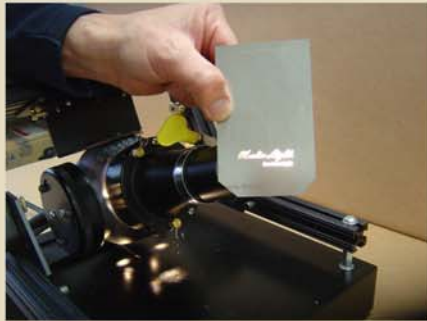


merlin light® logo projection



projected at approximately 50 ft.

The merlin light® now offers the ability to project logos or accent lighting on the interior or exterior of buildings. Using metal or glass gobos, the projection can include intricate lettering and colors.



exterior, weatherproof housing



M m e r l i n

light®
"see the magic"

precision optical framing projectors
since 1968



Architect:

"The magic that the Merlin Light creates in showcasing a piece of art is immeasurable."

-Kristi Hanson
Kristi Hanson Architects
www.kristihanson.com



Lighting Designer:

"One never wants to distract from the art collection by overpowering it with harmful or distracting light sources. The Merlin Light is the ultimate resource - hidden, U.V. protection and exact contour illumination."

-Glenn M. Johnson
Adaptive Design Group
www.adaptivedg.com



Artist:

"The Merlin Light captivates and intensifies the energy, movement and brilliant colors of my artwork. The effect is jaw-dropping sensational."

-Pamela Nielsen Contemporary Art
www.pamelanielsen.com

Art Collector:

"The focus that the Merlin Light brings to the most beloved pieces in our art collection dramatically enhances our enjoyment of them in ways we didn't know were possible."

-Private Art Collector
Boston, MA

Testimonials



Each merlin light is commissioned by our trained technicians. The confinements are hand cut to precisely highlight your special artwork.

It utilizes the latest in energy efficient Ceramic Metal Halide (CMH) lamp technology. CMH lamps use less watts and produce higher lumens and cooler temperatures; they also meet California Title 24 and Energy Commission efficacy requirements.

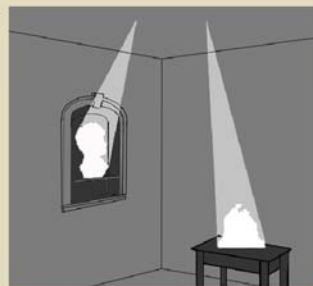
CMH Lamps:
20 Watt
39 Watt Dimmable
70 Watt Dimmable
150 Watt Dimmable

Halogen Lamps:
150 Watt Dimmable
250 Watt Dimmable

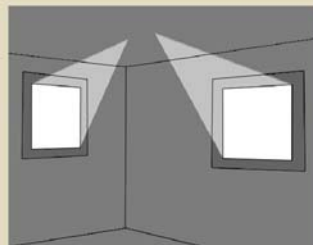
Any other light source for fine art is a compromise!



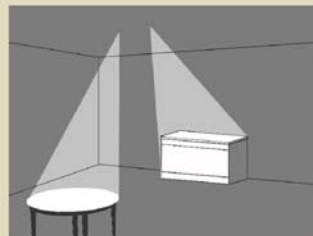
Adjustable, 4 shutter with iris fitting
(patent pending)



sculptures



paintings



furniture



The merlin light®

is a specialized art lighting system that has been enhancing fine art collections worldwide for over 40 years.

Its advanced technology produces precision lighting on selected objects and has been engineered to protect your art and furnishings from harmful UV rays. UV output is well below the minimum levels allowed by museum curators for sensitive materials.

Precision Imaging



Museum Quality



4" trim, top access



flush mount offset panel
on plaster or sheetrock



overlap cover for wood ceilings



a. exterior airtight housing

b. interior housing

c. ceiling access panel

d. merlin light assembly (mounts inside housing)

e. integrated ballast housing (inserts into housing)



scoop trim for large art



tongue and groove ceiling
application with wood veneer
on cover plate

Hidden Light Source



*interior, IC-airtight housing fits in standard ceiling framing